

The opportunities for Rosyth:

- A low carbon heat network and reliable renewable electricity at the waterfront where demand will grow
- Acting as a catalyst for inward investment for Rosyth and the surrounding area
- Capital investment of £325 million
- 300-500 construction jobs
- 70 permanent jobs for Rosyth
- Economic growth of £26 million per annum
(a calculation of Gross Added Value undertaken by Economists Roger Tym and Partners)
- Education and training opportunities
- Contracting opportunities for local businesses
- Support for Fife Council's commitment to renewable energy development



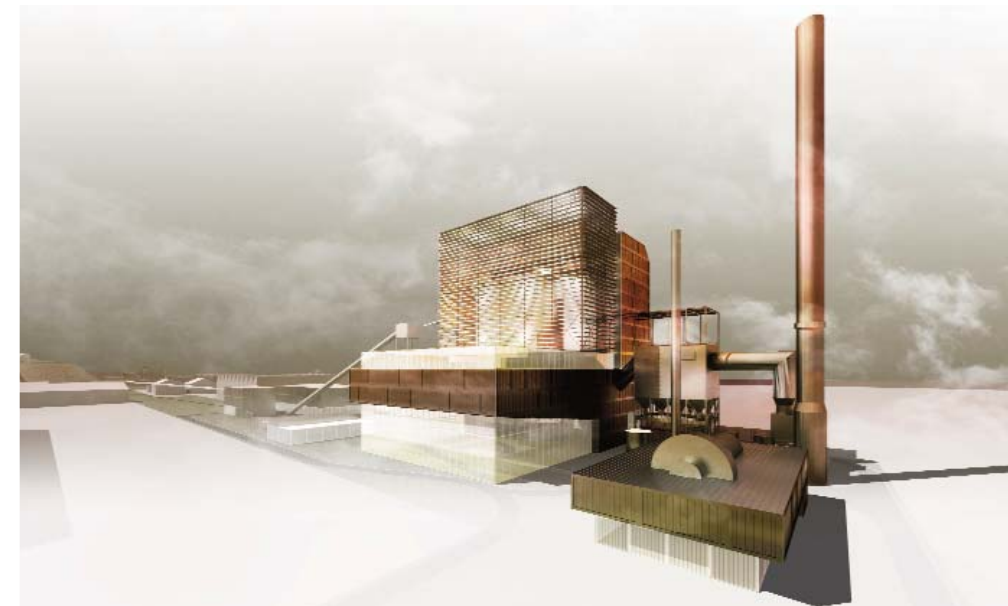
Forth Energy
1 Prince of Wales Dock
Leith EH6 7DX

Tel: 0131 555 8870
Fax: 0131 555 8788
Email: renewables@forthenenergy.co.uk



This document is
available online at:
www.forthenenergy.co.uk

The proposed wood fuelled Combined Heat and Power Plant can deliver reliable, responsible, renewable heat and electricity to Rosyth and the surrounding area. **The plant will generate 100 megawatts of low carbon electricity, equivalent to 42% of Fife's needs and 30 megawatts of low carbon renewable heat, capable of supplying surrounding businesses as well as being sufficient to power one of the largest heat networks in the UK.** The plant will offer an important opportunity to **drive new inward investment** from businesses that use large amounts of energy for heating or cooling, creating **an economic growth hub at Rosyth's waterfront.**



Rosyth Renewable Energy Plant: Design Concept Source: Gordon Murray Architects

Rosyth - The Benefits

Fife will play a leading role in developing Scotland's low carbon economy. Fife Council is at the forefront in recognising and promoting opportunities in the renewable energy sector with a strong focus on attracting new companies to create jobs and working with existing companies to promote renewable energy. Forth Energy's Combined Heat and Power Plant at the Port of Rosyth supports the Council's aspirations to drive the renewable energy sector and will generate 100 megawatts of low carbon electricity and the heat to supply one of the largest heat networks in the UK. **The plant will generate energy at the Rosyth waterfront regeneration area, where it is needed to realise the future vision for growth in the renewables industry, and it will support carbon reduction in Rosyth.** Forth Energy has designed and identified the cost of an extensive heat network, and is in active discussions with potential customers with a view to agreeing the supply of heating and cooling from the plant.

The plant will bring a number of benefits to Rosyth and Fife, including:

- Generation of low carbon electricity and the development of a low carbon heat network in Rosyth and the surrounding area, able to supply residential, commercial, industrial and community uses.
- Acting as a catalyst for inward investment making use of the available sites and the plant's potential to provide renewable low carbon heat.
- Opportunities to connect industrial users with significant heat or cooling loads to a heat network, reducing their carbon emissions and consequently their costs under the Carbon Reduction Commitment tax.
- A significant capital investment of £325 million to the Rosyth economy.
- An average of 300 jobs, peaking at 500 jobs during the construction period.
- 40 operational jobs and 30 fuel handling jobs.
- Economic growth in the Rosyth area, as the plant will contribute £26 million per annum to the local economy.
(a calculation of Gross Value Added undertaken by Economists Roger Tym and Partners)
- Education and training opportunities with linkages to universities and further education colleges.
- Contracting opportunities for local businesses.
- Support for Fife Council's commitment to renewable energy development.
- Highly efficient use of wood fuel to generate power and heat.

Rosyth - The Location

The plant's location at the Port of Rosyth allows **sustainably sourced wood fuel to be delivered directly by ship, the lowest carbon means of transportation.** The fuel will be used to generate low carbon electricity and heat at the waterfront regeneration area where **demand will grow.** The proposed plant is to be located at the eastern edge of the Port of Rosyth. The site covers just over 9 hectares.



Source: Gordon Murray Architects